



Yuasa Technical Data Sheet

Yuasa 6N2-2A-9 - Conventional 6 Volt Battery

Performance

Voltage	6V
Capacity (10-hour)	2Ah
Capacity (20-hour)	2.1Ah

Dimensions (±2mm)

Length	70mm
Width	47mm
Height	96mm

Weights & Measures

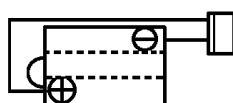
Mean Weight with Acid	0.5kg
Acid Volume	0.1l

Technology

Technology	Cast Sb/Sb
Separator	Reinforcing fiber+Glass Fiber



Cell Assembly Layout



Data Sheet generated on 18/03/2021 – E&OE